

# OPTIMA

The giant press brake that empowers productivity for the most demanding metal bending operations



Firma Essee, Bülrichen, Germany



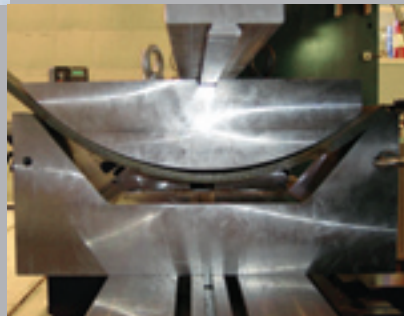
An Ursviken Group Company

# Ursviken Group empowers the productivity in metal sheet fabrication



*All our machines include a comprehensive warranty and training program.*

*Tailor made solutions for customer applications is one of Ursviken's reasons for long term relations and great success during the years.*



The Ursviken Group is a global business network of metal working solutions and service support providers. Building on a solid experience and history of over a century at the forefront of metal working and sheet metal fabrication, we offer a comprehensive package of high-quality solutions and life cycle services – enabling customers in over 100 countries to take a tiger leap in productivity and increase the return of investment, ROI.

## **Enhanced productivity for a variety of industries**

The group companies offer enhanced productivity to customers operating in a variety of industries,

including telecommunication, electronics, machine manufacturing, construction equipment, tube and pole manufacturing as well as ship building.

## **For a profitable and flexible production**

The two leading experts in metal sheet working: the Swedish Ursviken Technology AB and the Finnish Pivatic Oy are the first members of the global business network.

Ursviken Technology is a source for knowledge and service in metal working equipment. Pivatic is the pioneer in coil process fabrication solutions.



*Machines from Ursviken are successfully used within many varieties of manufacturing industries like infrastructure, construction...*



*...and for manufacturing of agricultural equipment.*

Our extensive knowledge and experience enables us to provide the customer with solutions and services that ensures a better return on investment.

### **Extensive product support**

All our machines include a comprehensive warranty and training program. Additionally, we offer a wide range of services including maintenance contracts, remote diagnostics (via modem or Internet), and application support. A wide range of training courses is available to suit individual customer requirements.

### **Ursviken Technology**

Ursviken Technology was established as a manufacturer of machine tools in 1885 – spanning three centuries! Continuous investment in research and development has resulted in design concepts that have given our products a worldwide reputation. By listening to our customers and providing innovative solutions to suit their requirements with a focus on quality and value, we believe that our continued success is assured and our position as the market leader will be retained. This is a position that we plan to keep and strengthen.



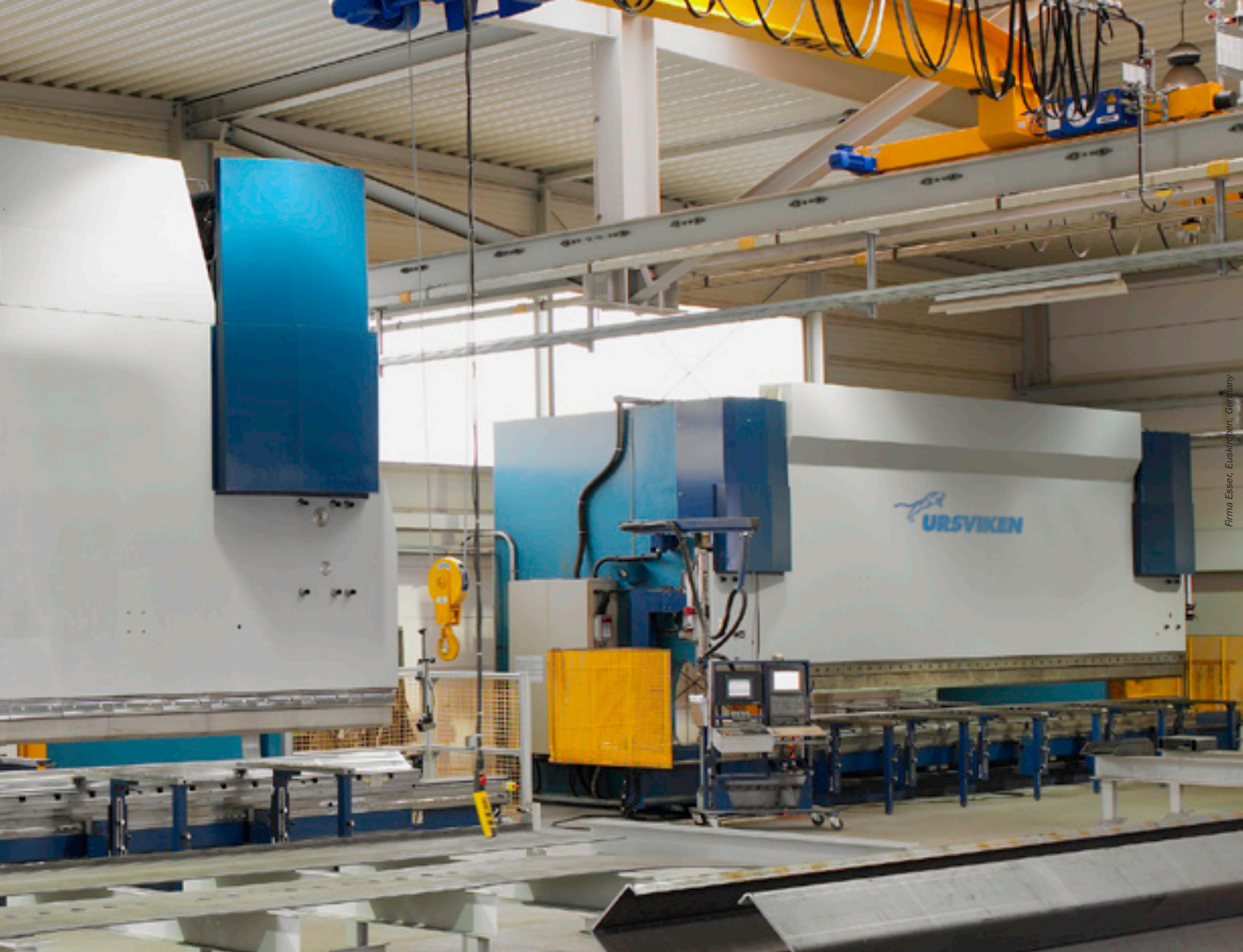
## Ursviken Optima – advanced forming technology for plate fabrication

**Ursviken is a leading manufacturer of CNC press brakes for sheet metal and plate, that has for more than 60 years continuously improved and developed press brake bending technology. With this extensive experience, the OPTIMA series has been developed to meet the demands of plate fabrication. With ongoing research and development Ursviken is uniquely qualified to deliver machines with accuracy, performance, efficiency and quality as their foundation**

The Optima press brake has features that will optimize the bending result, regardless of material thickness and quality. These features reduce set

up time and eliminate trial and error bending thus increasing productivity.

The Optima press brake can be customized to suit individual applications with different daylight, stroke, throat depth and bend length. The Optima can be equipped with light guards or security by laser beams, to facilitate a safe bending environment. Of equal importance is to provide the operator(s) with an ergonomic working environment. The Optima can be fitted with material handling/supports. A comprehensive training program is included with each Optima.



## Common options available with the Ursviken Optima CNC Press brake

- Lift/Swing (material support/follower)
- Programmable lower dies (VDT)
- Angle control with automatic compensation
- Application driven tooling packages
- Tool magazine
- CNC-crowning (deflection compensation)
- Tandem operation

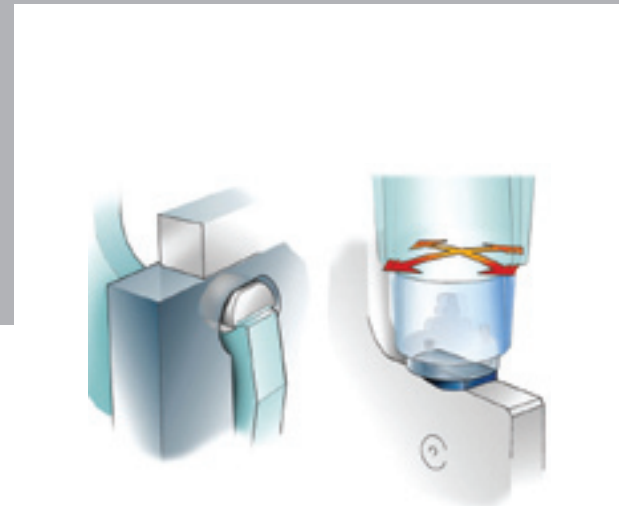
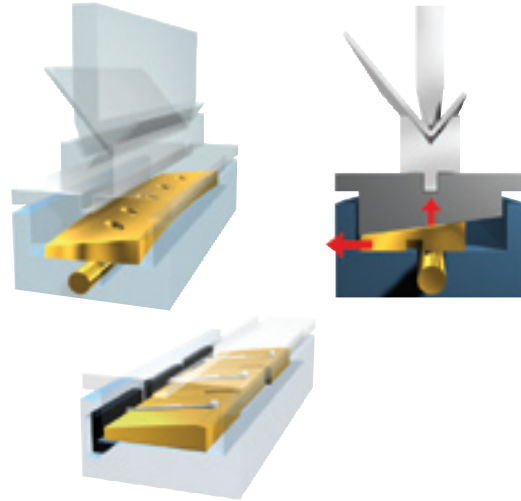
## Lift/Swing

CNC-controlled lift, electrically driven in vertical direction. The programmable table bracket can be equipped with a pivoting front bracket. This allows for material support during the entire bending cycle. This contributes to improved ergonomics, increased part accuracy and reduced set up time.



## Crowning

CNC controlled crowning, eliminates the need for shimming dies. With high repeatable accuracy of the crowning system consistent bends are achieved. For special requirements the Optima can be equipped with an advanced crowning with localized adjustment, FlexiCrown.



## Control System

The control system offers two alternatives that show product programming graphically in 2-D or 3-D. Powered by AutoPOL off line software as an option, we take the metal sheet fabrication to a new dimension. Use true 3-D models, bend simulate in virtual environment, bending process is considered when educated .dxf file is generated automatically for correct blank size. NC code for the press is generated in the same moment.

## Attachment of table and ram

A unique flexible attachment between the upper ram and piston rod allows the programming of large tilts of the ram with no possibility of damage to the cylinder.

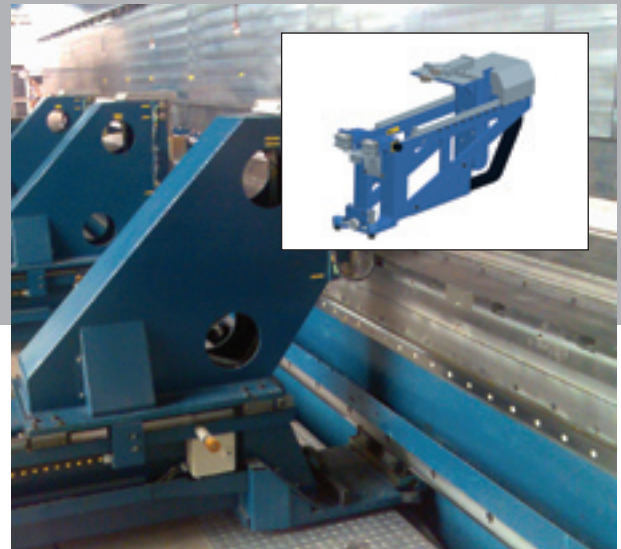
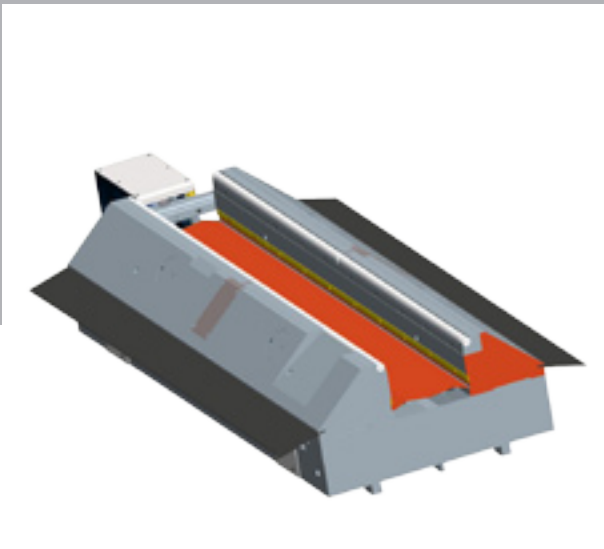
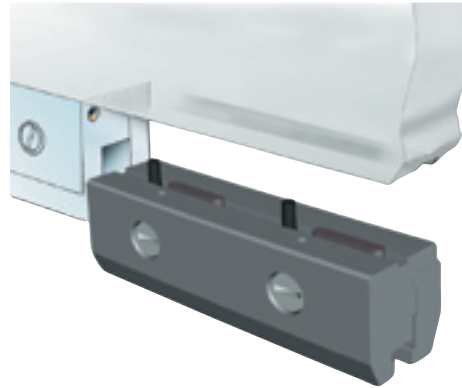
## Tandem operation

For applications where additional bend length is required, all Optima's can be placed in tandem. Forming can then be done in tandem or as two stand alone machines.



## Tool attachment

Choose between several alternative upper tool attachments with manual or hydraulic clamping.



## VDT and angle control system

The programmable lower tool, VDT and Ursviken angle control system combines accuracy with fast set up tooling. These two options increase productivity dramatically.

## Back gauge

The heavy duty stroke back gauge allows a greater gauging depth with material support. This increases gauging flexibility and significantly improves accuracy while reducing part handling. Back gauges are available in different models and sizes.



**URSVIKEN**

**Ursviken Technology AB**

Mekanvägen 71  
SE-932 82 URSVIKEN  
Sweden

Tel +46 (0)910 - 516 00  
Fax +46 (0)910 - 516 80

info@ursviken.com  
www.ursviken.com



**URSVIKEN**

**Ursviken Inc**

1636 Todd Farm Drive  
Elgin, IL 60123  
USA

Toll free (866)872 - 4868  
Tel +1 (847)214 - 8700  
Fax +1 (847)214 - 8705

www.ursviken.com  
www.pivatic.com



**PIVATIC**

**Pivatic Oy**

Varastokatu 8  
FI-05800 HYVINKÄÄ  
Finland

Tel +358 (0)19 427 4000  
Fax +358 (0)19 427 4099

info@pivatic.com  
www.pivatic.com